

SF30TI PHASE III – THE SENTINEL SERIES

HIGH PERFORMANCE COLOR THERMOGRAPH IMAGING SYSTEM

SPECIFICATIONS

SYSTEM INCLUDES:

- High performance IR camera
- Fixed focal length lens
- Integrated color thermograph and spot meter generator
- IP66/NEMA 4X **STEELON™** camera housing with adjustable mount
- Air funnel front plate with IR window
- Sun shield
- Quick change back plate
- Power supply with IP66/NEMA 4X enclosure and 15 ft. (4.6 m) cord
- Factory assembled, pre-adjusted, calibrated and ready for Installation

CAMERA:

Focusing:	Motorized Remote Focus
Resolution:	
Standard	320 x 240
High	640 x 480
Spectral range:	8 to 14 μ m
Video:	NTSC/PAL
Power:	24 VDC \pm 20 % or Power over Ethernet

ENCLOSURE:

STEELON™ camera housing (stainless steel over high temperature synthetic) (to 550°F [289°C] ambient – IP66 protection with sealed front plate). With optional accessories for high temperature or dusty environments. (3-10 PSI @ 3-10 SCFM typical) (**instrument quality only**)

MEASUREMENT:

Temperature ranges:	Range: -10° C - 1300° C (14°F - 2372° F)
Accuracy (% of reading):	\pm 2° C or \pm 2%
Emissivity correction:	0.10 to 1.00
Color Palettes:	Various

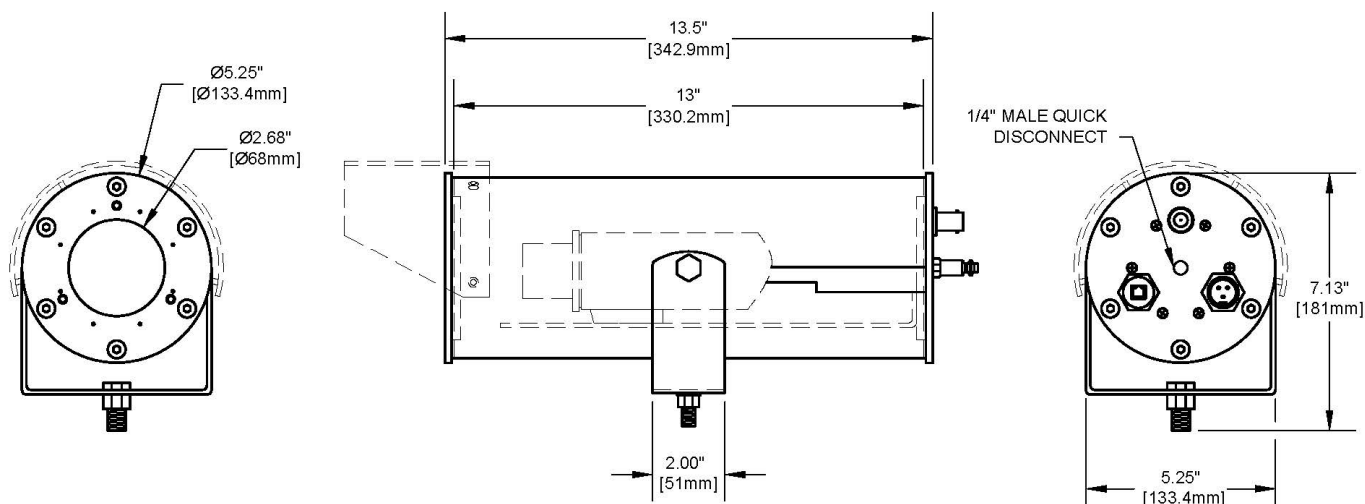
LENSES:

30° x 22° - Standard
22° x 16° - Telephoto
48° x 36° - Wide Angle

Focus Range:	Standard: 220 mm (8.7") to ∞ Wide Angle: 100 mm (3.9") to ∞ Telephoto: 190 mm (7.5") to ∞
--------------	--

OPTIONS AND ACCESSORIES INCLUDE:

- Video monitors
- Fiber optic or network interface
- Coaxial cable and connector kit
- Ethernet, fire wire, digital output
- Tripod base
- Image storage and temperature outputs
- Carrying case
- Air filter (optional air purge)
- IR management software
- Image processing & analysis software
- Alarm outputs
- Water-cooled jacket



SYN-FAB® INC.

HIGH TEMPERATURE & INDUSTRIAL PROCESS MONITORING SYSTEMS

7863 SCHILLINGER PARK ROAD • MOBILE, ALABAMA 36608 • USA

PH: (251) 633-4942 • FX: (251) 633-2514 • E: info@synfab.com

05/2025