

**SF36C PIII – THE SENTINEL SERIES  
SPECIAL APPLICATIONS COLOR CAMERA SYSTEM  
SPECIFICATIONS**

---

**SYSTEM INCLUDES:**

- High resolution color CCD camera
- Air purged stainless steel lens
- IP66/NEMA 4X camera housing with adjustable mount
- Quick change back plate with 15' (4.6 m) power cord
- IP66/NEMA 4X enclosure with 12 VDC power supply and 15 ft. (4.6 m) cord
- Regulator assembly with 1 ea. 15 ft. (4.6 m) quick disconnect air line
- Factory assembled, pre-adjusted and ready for installation

**CAMERA:**

Sensor: Color CCD  
Resolution: 560 lines horizontal analog or High-Resolution HD digital  
SNR: Greater than 50dB  
AGC: On/off selectable  
Video: NTSC, PAL, and High-Resolution digital formats available  
Power: 12 VDC with 100-240 VAC adapter - 50/60 Hz

**LENSES:**

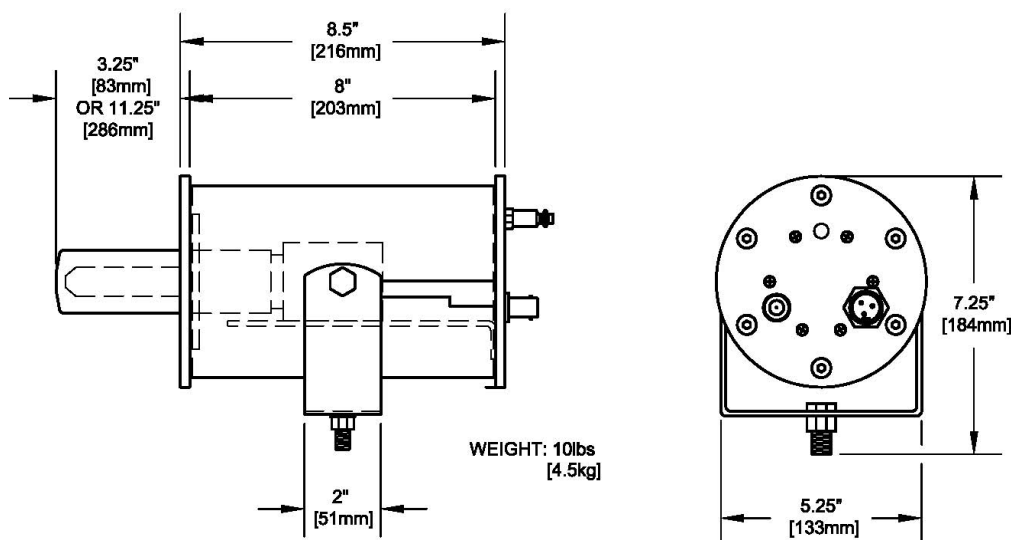
Usable length: 4", 12" (102, 305 mm)  
Diameter: 1.625 in (41 mm)  
Field of view: 70° H x 50° V x 80° D ■ 45° H x 30° V x 60° D (adjustable)  
Line of sight: Straight ahead

**ENCLOSURE:**

Material: PHASE III = STEELON™ (stainless steel over high temperature synthetic)  
Temperature: Ambient temps to 550°F [289°C] (with optional accessories)  
Air purge: 3-10 psig @ 3-10 scfm typical  
**(instrument quality air only) Temperature <100°F (40°C)**

**OPTIONS AND ACCESSORIES INCLUDE:**

- Video monitor
- Remote controlled pan and tilt base and zoom lens
- Video recorders
- Fiber optic, Ethernet and wireless video transmission
- Coaxial cable and connectors
- Air filter
- Multiplexers and switchers
- Heaters and thermostats



**SYN-FAB® INC.**

**HIGH TEMPERATURE & INDUSTRIAL PROCESS MONITORING SYSTEMS**

7863 SCHILLINGER PARK ROAD • MOBILE, ALABAMA 36608 • USA  
PH: (251) 633-4942 • FX: (251) 633-2514 • E: [info@synfab.com](mailto:info@synfab.com)

05/2025